

## Abstract

OTP Debug Software HC-IDE

- Edit ASM and C code
- Compile ASM and C code (Win XP doesn't support)
- Simulation
- Program

OTP Debug Hardware HC-ICD-V4

- Support On-line Simulation
- Support On-line Programming
- Support Firmware Update
- USB Power Supply



HC-ICD-V4

# Contents

<b>1</b>	<b>GET SOFTWARE AND HARDWARE</b> .....	<b>3</b>
<b>2</b>	<b>SOFTWARE INSTALLATION</b> .....	<b>4</b>
<b>3</b>	<b>SOLUTIONS TO SOFTWARE FAILURE</b> .....	<b>7</b>
3.1	GET FILE .....	7
3.2	INSTALL VC ENVIRONMENT .....	7
3.3	INSTALL DIRECTX_REPAIR.....	9
<b>4</b>	<b>VERSION DESCRIPTION</b> .....	<b>12</b>

# 1 Get Software and Hardware

Software download :

[http://www.holychip.cn/download.php?class\\_id=102102102](http://www.holychip.cn/download.php?class_id=102102102)

Hardware purchase :

<https://shop155767245.taobao.com/?spm=a230r.7195193.1997079397.1.6ec6570cRIIBgM>

## 2 Software Installation

名称	修改日期	类型	大小
 HC-IDE V3.0.4.0.exe	2020/7/7 10:41	应用程序	36,526 KB

Figure 2-1 Unzip and run the exe



Figure 2-2 installation wizard, click the "next" button

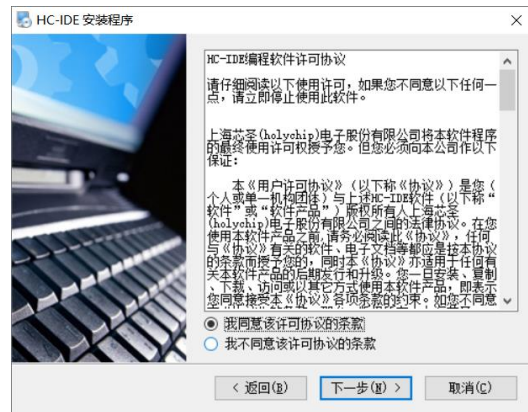


Figure 2-3 installation wizard, click the "next" button



Figure 2-4 installation wizard, click the "next" button



Figure 2-5 installation wizard, click the "next" button



Figure 2-6 installation wizard, click the "next" button



Figure 2-7 installation wizard, click the "next" button



Figure 2-8 installation wizard, click the "Finish(F)" button

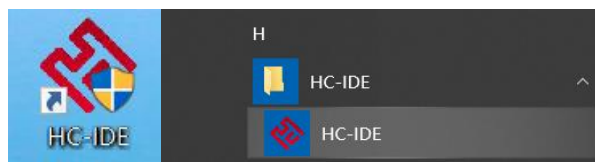


Figure 2-9 installation finished, desktop shortcut, start menu shortcut

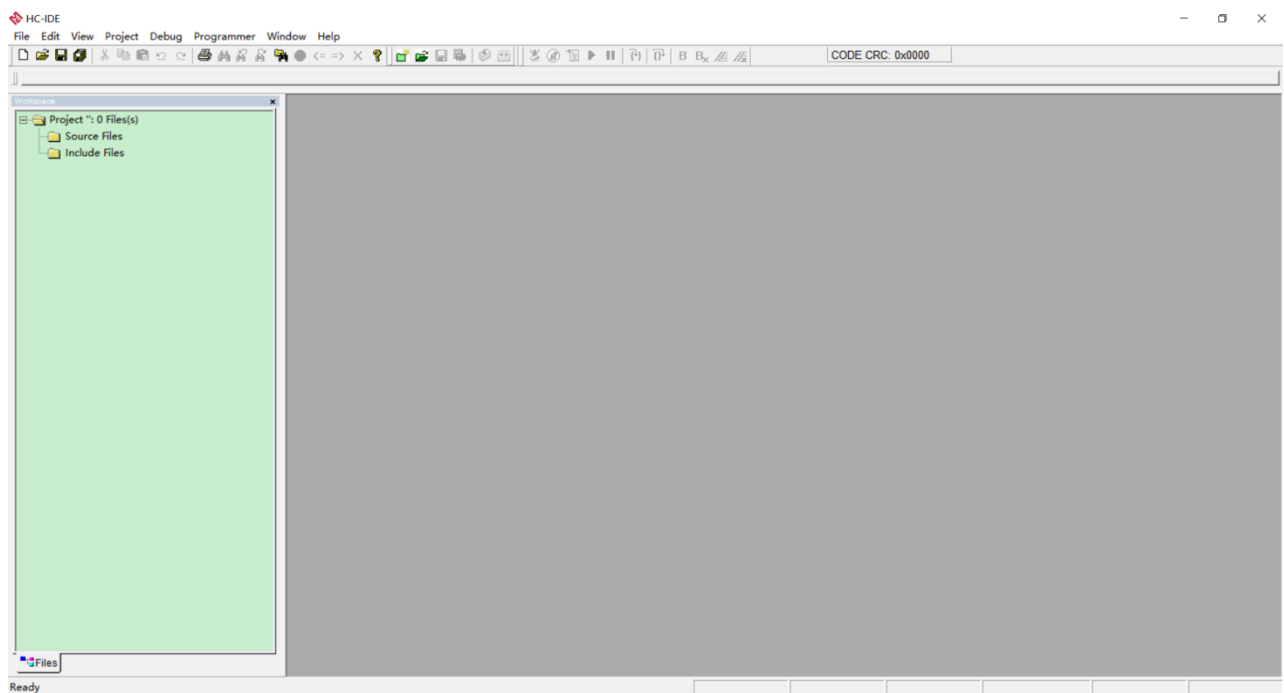


Figure 2-10 HC-IDE

## 3 Solutions to Software Failure

### 3.1 Get File

URL: <https://pan.baidu.com/s/1pu9V4NPwFwF7rJRJZ-NLfg> Code: b86b。

After the download is completed, two folders are extracted:

"VC runtime collection v1.56\_Ttrar" and "DirectX\_Repair\_3.7\_Enhanced\_XiaZaiBa".

### 3.2 Install VC Environment

Enter "VC runtime collection v1.56"\_Ttrar "folder, double-click to run" VC runtime collection v1.56 "\_ttrar.exe" 。

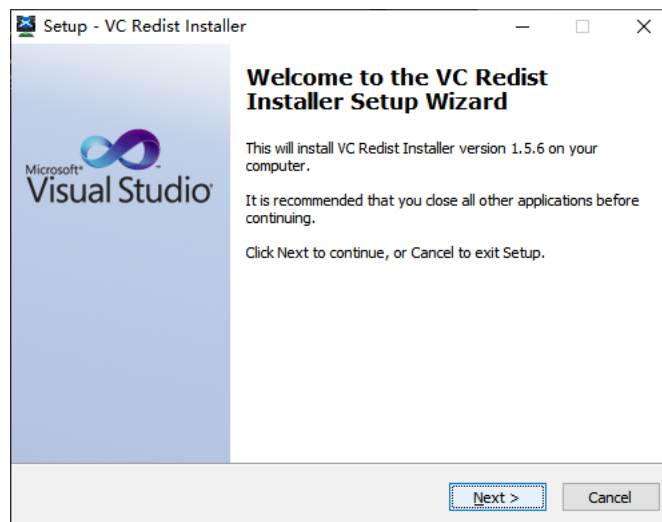


Figure 3.2-1 VC Redist Setup Wizard, click the "Next" button

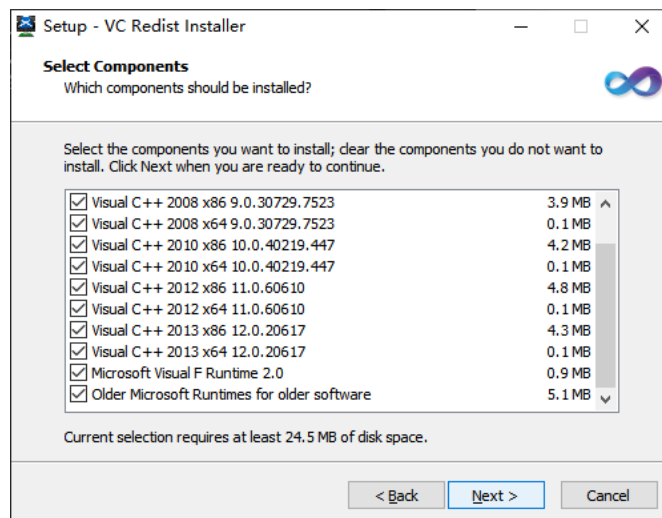


Figure 3.2-2 VC Redist Setup Wizard, click the "Next" button

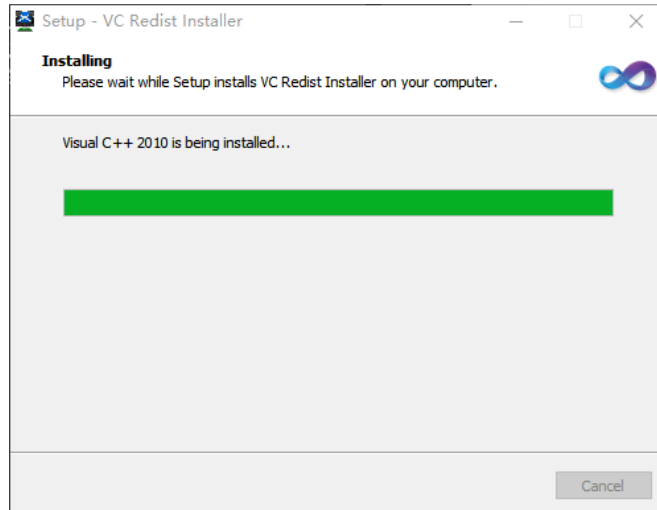


Figure 3.2-3 VC Redist is being installed...

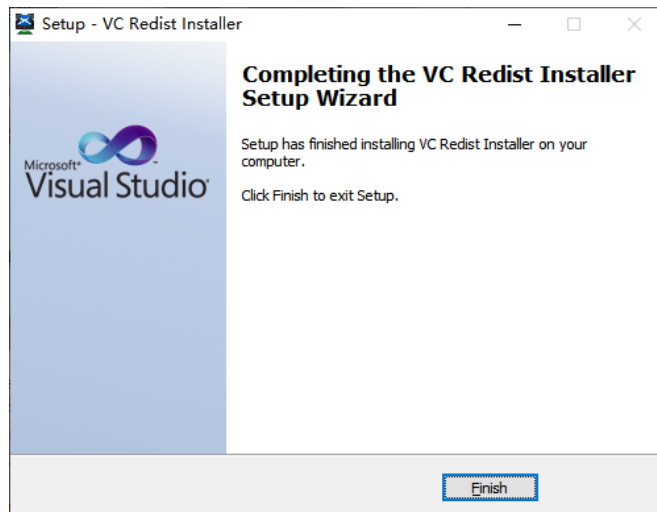


Figure 3.2-4 VC Redist Setup Wizard, click the "Finish" button



### 3.3 Install DirectX\_Repair

Enter DirectX\_Repair\_3.7\_Enhanced\_DirectX repair V3.7 (Enhanced Edition), a subfolder within the xiazaiba folder.

Win7 users install DirectX Repair.exe.

Win8 and win10 users install DirectX\_Repair\_win8\_Win10.exe.

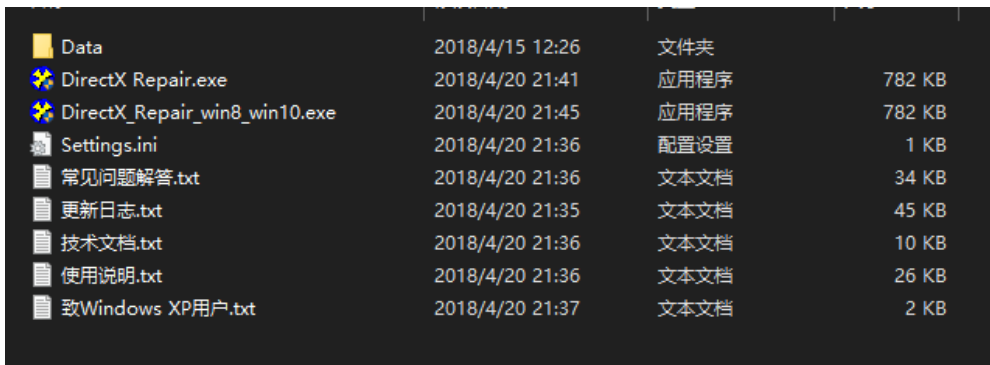


Figure 3.3-1 double click to run DirectX\_Repair\_win8\_win10.exe (take win10 as an example)

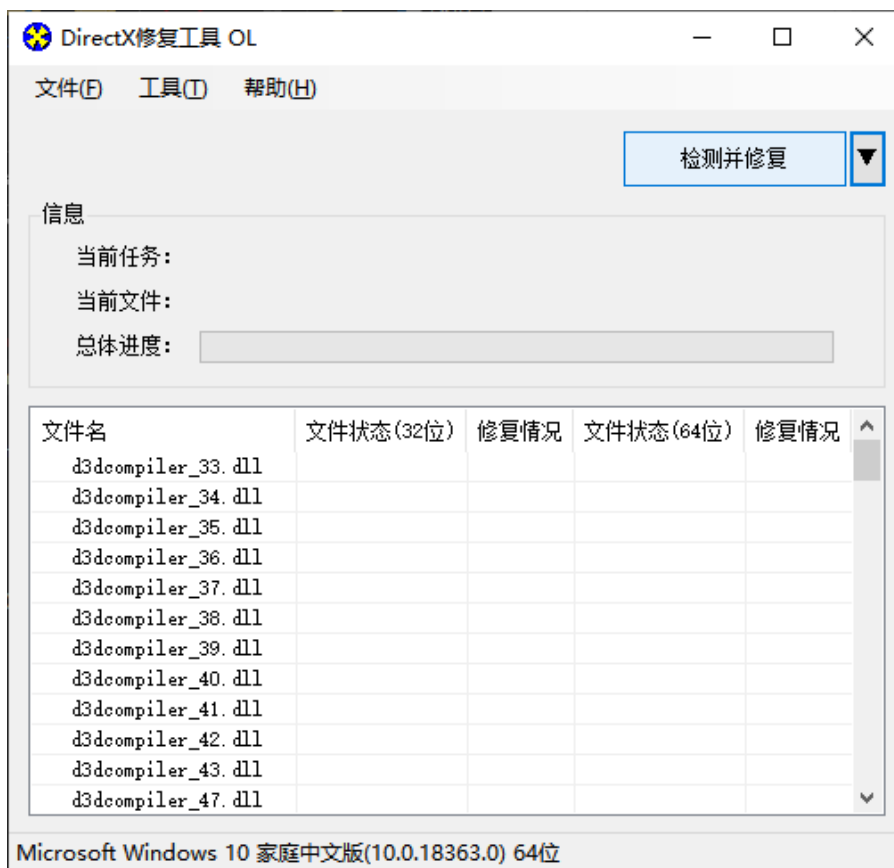


Figure 3.3-2 installation wizard, click the "detect and repair" button

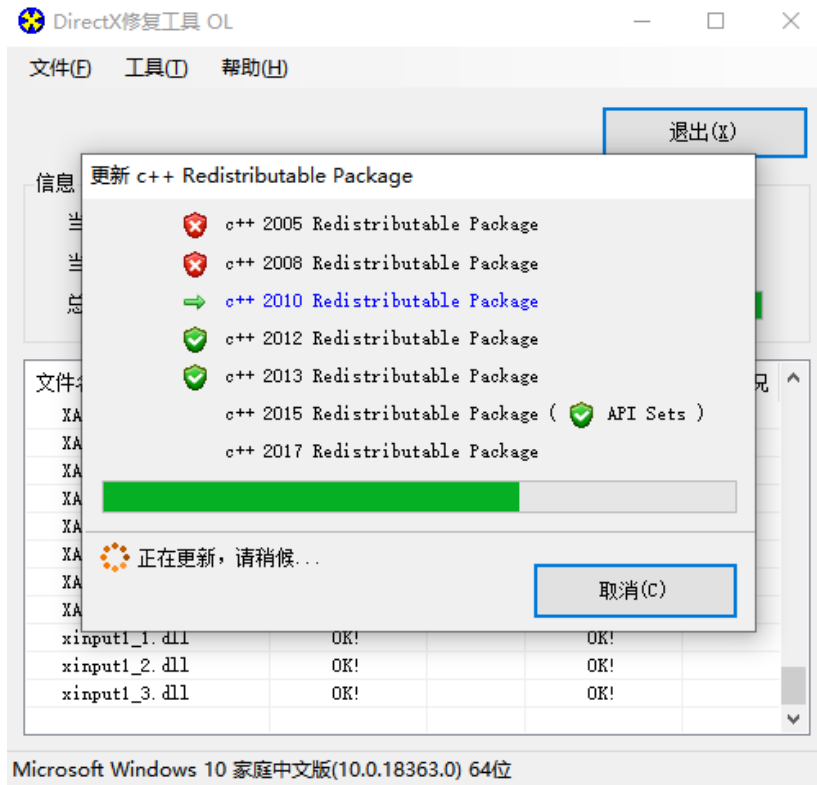


Figure 3.3-3 installation wizard, running...

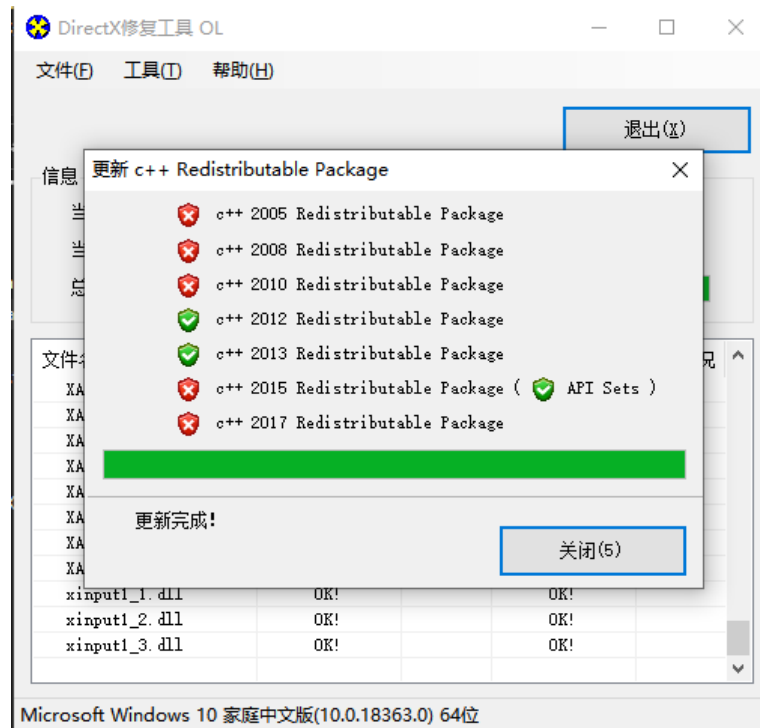


Figure 3.3-4 installation wizard, running...

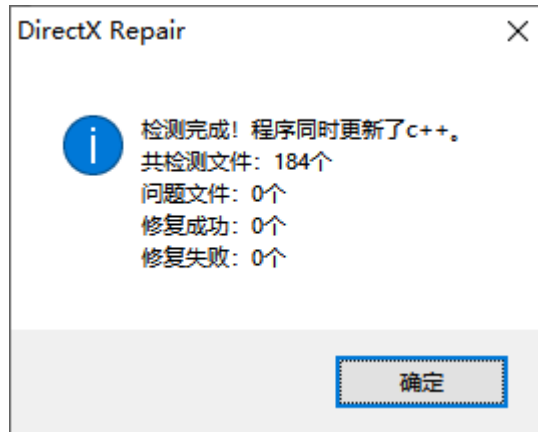


Figure 3.3-5 installation wizard, click the "OK" button

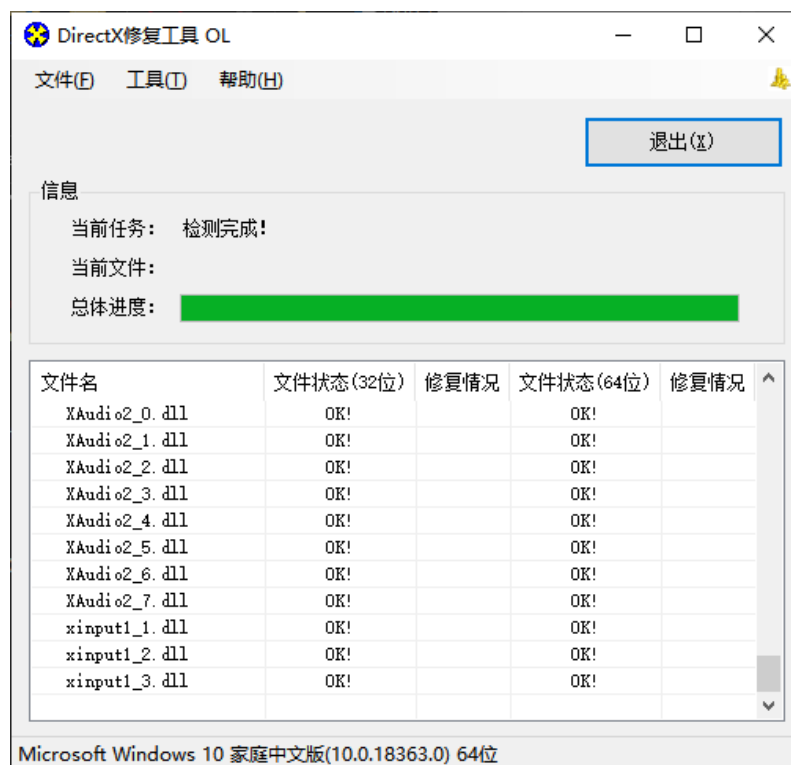


Figure 3.3-6 installation wizard, click the "exit" button to complete the repair

## 4 Version Description

Version	Date	Describe
Ver1.00	2020/11/6	First edition

### IMPORTANT NOTICE – PLEASE READ CAREFULLY

Holychip reserves the right to make change without further notice to any products herein to improve reliability, function or design. Holychip does not assume any liability arising out of the application or use of any product or circuit described herein; neither does it convey any license under its patent rights nor the rights of others. Holychip products are not designed, intended, or authorized for use as components in system intended, for surgical implant into the body, or other applications intended to support or sustain life, or for any other application in which the failure of the Holychip product could create a situation where personal injury or death may occur. Should Buyer purchase or use Holychip products for any such unintended or unauthorized application. Buyer shall indemnify and hold Holychip and its officers, employees, subsidiaries, affiliates and distributors harmless against all claims, cost, damages, and expenses, and reasonable attorney fees arising out of, directly or indirectly, any claim of personal injury or death associated with such unintended or unauthorized use even if such claim alleges that Holychip was negligent regarding the design or manufacture of the part.

**Holychip**